

WHAT'S NEW IN SOLIDWORKS 2015 SOLUTIONS

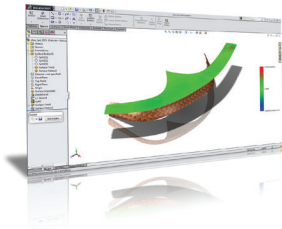


1 NEW PRODUCT DEVELOPMENT WORKFLOWS

- SOLIDWORKS® Model Based Definition (MBD) enables drawingless product detailing with 3D PMI annotations; output to eDrawings® or 3D PDF
- SOLIDWORKS Treehouse provides visual assembly structure planning, creation, editing, and viewing
- Prepare models automatically for export to popular AEC applications

Benefits

Reduce time to market and comply with new industry standards.

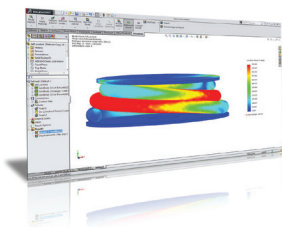


2 INTEGRATED CAPABILITIES CONNECT DESIGN AND MANUFACTURING

- SOLIDWORKS Inspection automates inspection drawings and reports
- SOLIDWORKS Costing supports sensors and costing of weldments, plastic/cast parts, machined castings, and 3D printed parts
- Print directly to 3D printers in AMF and 3MF formats
- Use advanced techniques to flatten surfaces

Benefits

Speed up downstream manufacturing and bridge the gap between design and manufacturing.



3 SOLIDWORKS PERFORMANCE

- File size reduced by ~50%
- Faster component patterning, and hide/show of assemblies
- SOLIDWORKS Simulation supports Intel® Solver and multi-core for contact detection
- Define specific graphic regions to render in PhotoView 360
- SOLIDWORKS Enterprise PDM manages large data sets more efficiently

Benefits

Faster modeling, analysis, and rendering capabilities leaves more time to improve designs.

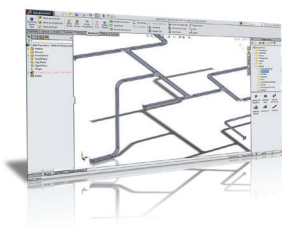


4 PART AND SURFACE MODELING

- Sketch: Line from mid-point; rectangle with horizontal/vertical construction lines
- Splines: Improved Spline on Surface; convert Style Spline to Spline Points
- Patterns: Improved Fill, Linear, and Variable Pattern
- Advanced geometry: Asymmetric Fillets; split surfaces; sketch plane normal to view

Benefits

Create sketches, complex patterns, and advanced geometry faster and with less effort.

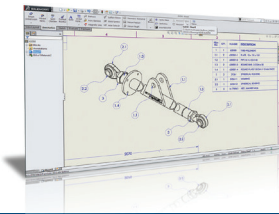


5 ASSEMBLIES

- Mates: Center components on faces; select geometry to limit Width Mate
- Routing for rectangular sections, e.g., HVAC ducts, cable trays and chutes
- Simulate roller/energy chains using patterns along open or closed loops
- Exploded View: Radially and along axis; space components on drag

Benefits

Faster and easier assembly of components.

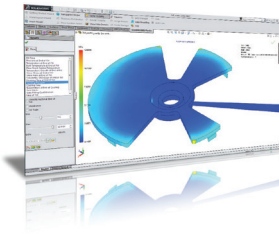


6 DRAWING IMPROVEMENTS

- Track view locations with automated drawing sheet zone annotations
- Enhanced formatting control of drawing and table notes
- Omit layers from printing; use splines as leaders
- Improved angle dimensioning and command of decimal rounding

Benefits

Find drawing views faster, and experience more automation and control.

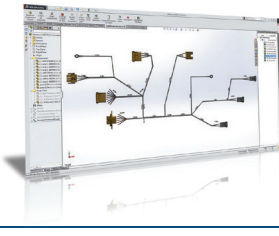


7 DESIGN SIMULATION

- Predict product durability under dynamic loading and manage a combination of load conditions in SOLIDWORKS Simulation
- View nonlinear results during the solve in SOLIDWORKS Simulation to ensure convergence
- Rotating mesh regions in SOLIDWORKS Flow Simulation deliver enhanced simulation of rotating machinery
- SOLIDWORKS Plastics improves plastic part design with up-front Venting Analysis

Benefits

Simulate real-life scenarios to predict product performance prior to manufacturing.

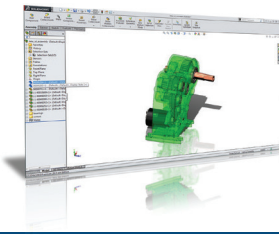


8 ELECTRICAL DESIGN

- Dynamic Connector tools simplify the design and use of connectors
- Advanced access to user-based controls for key tools
- In-line 3D routing diagnostics identifies and resolves routing issues
- Advanced Formula Manager provides access to system and mathematical variables in complex formulas

Benefits

Accelerate the development, creation, and integrity of electrical systems designs.

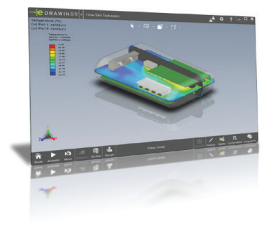


9 USER EXPERIENCE

- Dynamic Reference Visualization shows a graphical view of relationships between features
- Selection Sets let you select multiple entities and save for reuse
- Isolate components while editing in context within an assembly
- Temporarily preview hidden bodies or components from FeatureManager

Benefits

Work more efficiently and better understand/visualize design intent of your models.



10 EXPANDED COMMUNICATION AND COLLABORATION

- SOLIDWORKS Enterprise PDM Web2 client connects browser-ready devices to a vault
- eDrawings now has a UI adapted for touchscreen, and supports SOLIDWORKS Plastics result plots
- MySolidWorks offers enhanced online learning and certification; ability to share/view designs online and research a global manufacturing network
- Collaborative Sharing uses community-based social innovation to provide greater connectivity to SOLIDWORKS, eDrawings, and DraftSight®

Benefits

Expand the reach of design tools with faster, easier connections and better social collaboration - anytime, anywhere.

See the full range of SOLIDWORKS software for design, simulation, technical communication, and data management at www.solidworks.com/products2015.

Leamington Spa - Head Office

Olympus House
Olympus Avenue
Leamington Spa
CV34 6RJ

Tel: 01926 333777
Fax: 01926 333778
Web: www.solidolutions.co.uk
Email: sales@solidolutions.co.uk

Fareham | Durham | London

Sheffield | Leeds | Manchester

Cambridge | Exeter | Bristol

www.solidolutions.co.uk/contactus



Follow Us: [@solidolutions](https://twitter.com/solidolutions) | facebook.com/solidolutions | youtube.com/user/solidolutionsmanltd | linkedin.com/company/solid-solutions-management | solidolutions.tv